

2020-02

Innovative and supportive strategies in bilingual education: the case of secondary education in Greece

Karamitrou, Amalia

Research Institute for Entrepreneurship Development (RIED): Neapolis University, Pafos

<http://hdl.handle.net/11728/11532>

Downloaded from HEPHAESTUS Repository, Neapolis University institutional repository

INNOVATIVE AND SUPORTIVE STRATEGIES IN BILINGUAL EDUCATION: THE CASE OF SECONDARY EDUCATION IN GREECE

Amalia. Karamitrou

University of Macedonia, Greece

Abstract

This paper investigates whether, in intercultural secondary schools in Greece, some specific innovative forms of bilingual education are applied and additionally examines the degree of their effectiveness. These forms refer to the use of new technologies, the use of illustration and surveillance material in recalling previous knowledge, the combination of learning the subject in conjunction with language learning, the techniques of condensing, developing or modifying texts, the use of electronic dictionaries, in use of text organizers (prologue, italics), use of conventional words, use of multimodal material, use of text organizers (prologue, italics), dramatization, role play, simulation, and finally experimentation.

130 Greek secondary teachers participated in the study. Implicative Statistical Analysis was employed for data analysis.

Among the most important findings is that dramatization drives respondents to use role play and it is the role play that motivates them to use illustration and surveillance material as well as simulation. In addition, the results showed that the use of multimodal material leads to the use of a combination of learning the cognitive object in conjunction with learning the language of both illustration and supervisory material. Finally, equally important was the finding of the unambiguous relationship between experiment and pre-notation.

Introduction

Bilingual education is of a major importance nowadays. The issue of bilingual education has occupied educators, policymakers, researcher for a long time. Policymakers, educators and teachers are seeking to develop innovative strategies and learning approaches. Creese & Blackledge (2010) and Cumimins (2005) argued that it is necessary a rethinking and reevaluation of constructions of traditional pedagogy. Researchers claimed that language polices should take into account students language rights that are connected to social cohesion (Coleman, 2015; Pinnock, 2015; Perera,

2015). As Milani (2008) stated language is considered as a significant social identity indicator both for the individual and for the nation state.

Researchers suggested that multilingual language approaches should be in a line with curricula, pedagogies and teachers' experiences (Erling et al., 2016; Erling et al., 2017) due to the fact that teaching in a language unknown to students as well as difficult and different regarding mother language could be lead to students discrimination and drop out (Brock-Utne, 2017; Manocha & Panda, 2017). According to Lundberg (2017) bilingual education can be a means of creating racial and social margins as well as shrinking social and cultural consistencies between groups.

There are educational, linguistic and sociolinguistic factors that affect multilingual and consequently bilingual education. Linguistic factors can be distinguished in three categories 1. Transitional, 2. Maintenance and 3. Enrichment (May, 2008; Baker, 2011). Bilingual education around the world is grounded on a number of different models. Most of these indicate that languages had better be strictly isolated in teaching and teach (Schwartz & Asli, 2014). Heugh et al. (2007) and Heugh (2013) claimed that learning it's better to be taken place in mother language for the long period. In addition Heugh et al. (2007) and Heugh (2013) claimed that learning it's better to be taken place at least six to eight years in abundant resourced, operational learning backgrounds. Mother language can offer students with the sense of cultural, social, national, ethnic and racial identity (Morcom, 2017). Furthermore bilingual education is seen as an important political issue (Koyama & Bartlett, 2011). Bilingual education can create a community without strong social, political, racial and economic inequalities (Koyama & Bartlett, 2011). Consequently mother language and can increase wellbeing thus is important for students to be taught their mother language (Morcom, 2017).

Arthur & Martin (2006) claimed that in the research literature was an interactional methodology to the teaching of two languages. Arthur & Martin (2006) also argued that the teaching of two languages allows a flexible transfer between languages that is essential for operational and effective learning. Blackledge and Creese (2009) also advocated for the flexible use of languages. In addition Lasagabaster & Garcia (2014) and Guzula et al., (2016) advocated for the flexible multilingual approaches.

There is also the code-switching approach in bilingual education (Arthur & Martin, 2006; Freeman, 2007; Schwartz & Asli, 2014) whereas all students get teachings in both languages, but separately, using the 'language-time' strategy. In addition there is the two-way system (Lee, 2007) that is a mixture of languages or code-switching

approaches, whereas an emphasis is given in order the languages to be kept detached, isolated, discrete, and distance. The two-way system, bilingualism is accepted as double monolingualism (Schwartz & Asli, 2014).

According to researchers four main categories of language-teaching strategies regarding bilingual students named 1. Bilingual resource strategies (Ernest-Slavit and Maulhern, 2003; Manyak, 2004; Kenner et al., 2008), 2. Metalinguistic strategies (Cumimins, 2000; Kenner et al., 2008; Creese & Blackledge, 2010), 3. Nonlinguistic strategies (Nikolaidis, 2002) and finally 4. Tanslanguaging strategies (Cumimins, 2005; Arthur & Martin, 2006; Cumimins, 2008; Creese & Blackledge, 2010).

Lundberg (2017) argued that previous research indicated serious obstacles in bilingual education. These obstacles includes different parameters of the educational system rely on nationalistic ideologies, dominant language discourse, political positions etc (Lundberg, 2017). Consequently bilingual strategies is of a major impotence in order the goals and aims of bilingual education to be successful.

Thus this study is searching the existence of innovative forms of bilingual education are applied in Greek educational system and additionally examines the degree of their usefulness. These forms are related to the use of new technologies, the use of illustration and surveillance material in recalling previous knowledge, the combination of learning the subject in conjunction with language learning, the techniques of condensing, developing or modifying texts, the use of electronic dictionaries, in use of text organizers (prologue, italics), use of conventional words, use of multimodal material, use of text organizers (prologue, italics), dramatization, role play, simulation, and finally experimentation.

Purpose

This paper investigates whether, in the intercultural secondary schools in Greece, some specific innovative forms of bilingual education are applied and additionally examines the degree of their effectiveness.

Participants

Regarding 130 respondents ' gender, 105 are women, (80.8%) and 25 men (19.2%). Of the 130 respondents, 95 (73.1%) are education executives and 35 (26.9%) are not. In terms of years of service, 16 have from one to five years of service, 20 (15.4%) from 6 to 10 years of service, 19 (14.6%) from 11 to 15 years of service, 28 (21.5%) from 16

to 20 years, 30 (23.1%) from 21 to 25 years and finally, 17 (13.1%) from 26 to 30 years. For 53 (40.8%) respondents their school or schools in their area of responsibility belong to an urban center area, for 25 (19.2%) in a suburb area, for 28 (2.5%) in a semi-urban area, for 16 (12.3%) in rural and 8 (6.2%) in inaccessible.

Research methodology

This section is dedicated to the presentation of a main type of clustering methods: Statistical Implicative Analysis (SIA). Statistical Implicative Analysis (SIA in the Didactic of Mathematics (Gras, 1979). Since Régis Gras' doctoral dissertation, a great deal of research has been published exploring the different paths of theory development (Gras et al., 1997; Gras, & Couturier, 2013; Gras et al., 2004; Gras, et al., 2008; Gras, Regnier, & Guillet, 2009; Gras, Régnier, Marinica, & Guillet, 2013; Anastasiadou et al., 2007; Anastasiadou & Panitsides, E. 2014; Nikolaou et al., 2017a; Petridou et al., 2017b). Thus, the method rests on implication intensity which measures the degree of astonishment inherent in a rule. For example, the set of items B, then it is legitimate and intuitive to expect that the counter part is and the set of non-B items is strongly associated with the set of non A-items (Anastasiadou et al., 2007; Anastasiadou et al., 2008; Anastasiadou et al., 2010a; Anastasiadou, 2018a; Anastasiadou, 2019a; Anastasiadou, 2019b; Anastasiadou & Gagatsis, 2017; Anastasiadou & Giossi, 2018; Anastasiadou, & Papadaki, 2019; Anastasiadou & Pappa, 2019; Christodoulou, et al., 2017; Ntotsi, & Anastasiadou, 2019; Fotiadis & Anastasiadou, 2019).

The implicative representation of the associations is presented in Figure 1 by a weighted graph without cycle where each edge responds to a rule, and in Figure 2 by an ascending hierarchy oriented by meta-rules (Anastasiadou, 2018; Anastasiadou, 2019a).

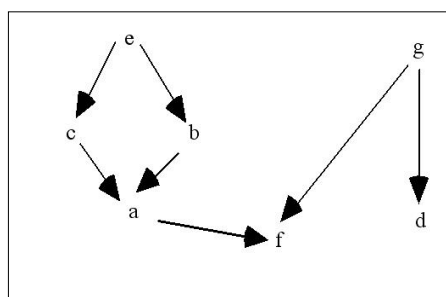


Figure 1

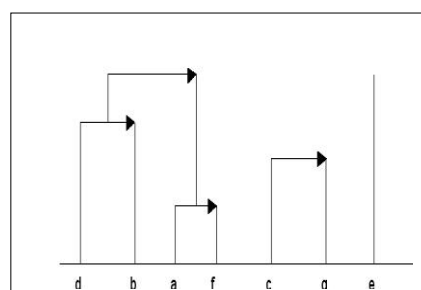


Figure 2

Similarity: a symmetrical analysis, according to the algorithm proposed by I.C. Lerman (Lerman, 1978), is a link that brings practically all items together in a large class, whatever their a priori taxonomic classification may be (Gras & Bodin, 2017). The

Similarity indices are used in data analysis to study objects described by binary variables (Anastasiadou, 2019). According to Blanchard (2009), they allow one to assess the likeness between two objects and two variables.

SIA is used for data analysis. Specifically Similarity tree (widely known as dendrogram) (Lerman, 1981) and Implicative graph ranked by CHIC Software (Couturier, 2008).

Results

Descriptive statistics: From the following table, Item Statistics Table 1, we observe that the supportive strategies that respondents estimate that teachers use to a large extent in teaching or suggest to the teachers they work with are the use of new technologies ($M = 3.69$, $sd = 1.011$), the use of illustration and supervisory material ($M = 3.73$, $sd = 1.116$), the recall of previous knowledge ($M = 3.73$, $sd = 1.079$), the combination of learning the subject in combination with language learning ($M = 3.62$, $sd = 1.061$) and finally, the techniques of condensing, developing, modifying texts ($M = 3.54$, $sd = 1.421$).

Table 1: Item Statistics

| Item Statistics | | | |
|---|------|-----------|-----|
| Items: E9: Which are the supportive strategies that teachers use to a large extent in teaching or suggest to the teachers that you work with? | Mean | Std. | |
| | | Deviation | N |
| E9.1: Usage of conventional words | 3.23 | 1.107 | 130 |
| E9.2: Usage of multimodal material | 3.15 | 1.156 | 130 |
| E9.3: Usage of new technologies | 3.69 | 1.011 | 130 |
| E9.4: Usage of electronic dictionaries | 3.46 | 1.140 | 130 |
| E9.5: The sage of illustration and supervisory material | 3.73 | 1.116 | 130 |
| E9.6: The recall of previous knowledge | 3.73 | 1.079 | 130 |
| E9.7: Combination of learning the subject in combination with language learning | 3.62 | 1.061 | 130 |
| E9.8: Usage of text organizers (preface, italics) | 3.42 | .987 | 130 |
| E9.9: Techniques of condensing, developing, modifying texts | 3.54 | 1.421 | 130 |
| E9.10: dramatization | 3.12 | 1.275 | 130 |
| E9.11: Game roles | 3.19 | 1.357 | 130 |
| E9.12: Simulation | 3.19 | 1.234 | 130 |
| E9.13: Experiment | 3.00 | 1.265 | 130 |

Moderate / satisfactory is the extent that respondents expatiate that supportive strategies is related in terms of the usage of conventional words (M = 3.23, sd = 1.107), the usage of multimodal material (M = 3.15, sd = 1.156), the usage of electronic dictionaries (M = 3.46, sd = 1,140), the usage of text organizers (preface, italics) (M = 3.42, sd = 0.987), the dramatization (M = 3.12, sd = 1.275), the game roles (M = 3.19, sd = 1.357), the simulation (M = 3.19, sd = 1.234) and finally, the experiment (M = 3.00, sd = 1.265).

Implicative Statistical Analysis: The similarity graph presents the groupings of statements based on consumer behavior when completing the questionnaire. The similarities with the intense black color are significant in terms of 99% importance. The similarity diagram (Figure 1) shows three distinct similarity groups (Group A, Group B, Group C). The first similarity group (Group A) refers to similarity relationships between variables ((E9.1 E9.6) (E9.9 (E9.12 E9.13))) (similarity: 0.0442223).

In particular, the similarity (E9.1 E9.6) (similarity: 0.623455) demonstrates the similar tactic of respondents adopting as assistive strategies in their teaching or suggesting to the teachers they work with both the use of conventional dictionaries and recall prior knowledge.

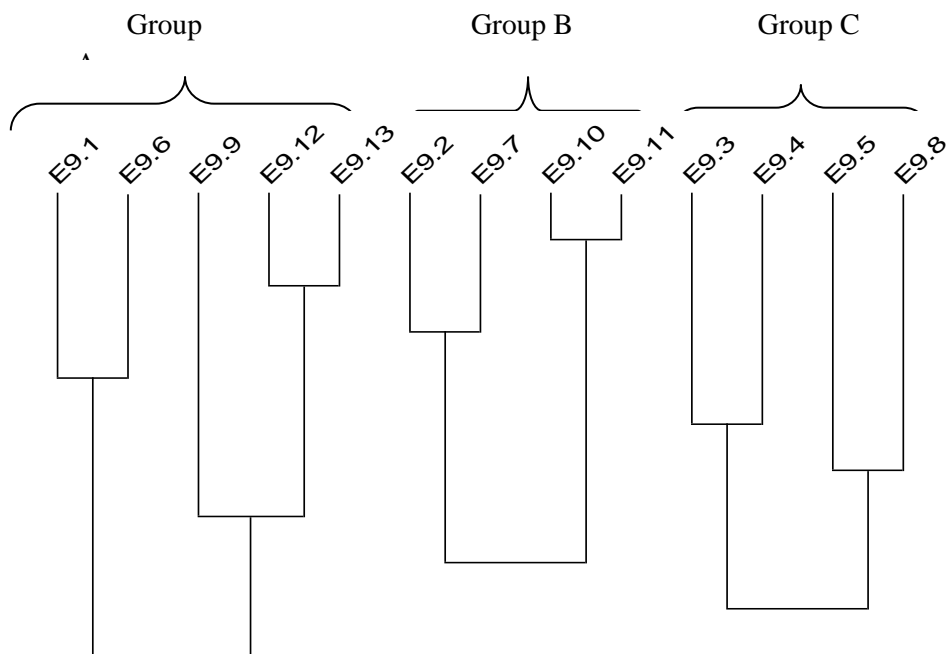
The similarity (E9.12 E9.13) (similarity: 0.704774) which is the strongest similarity within Group A refers to the way in which they adopt simulation and experimentation as supportive teaching strategies. This group (E9.12 E9.13) (similarity: 0.704774) joins a third variable third E9.9 and creates the similarity (E9.9 (E9.12 E9.13)) similarity: 0.373423) referring to the technical densities, development or modification of texts. This similarity is moderately important. However, the first similarity group (Group A) refers to similarity relationships between variables ((E9.1 E9.6) (E9.9 (E9.12 E9.13))) (similarity: 0.0442223) is almost zero, which demonstrates that respondents generally differentiate between the techniques of using conventional dictionaries and recalling prior knowledge, with simulation, experimentation, and techniques of condensing, developing, or modifying texts as helpful teaching strategies.

The second similarity group (Group B) refers to similarity relationships between variables ((E9.2 E9.7) (E9.10 E9.11)) (similarity: 0.196121). More specifically, the similarity (E9.2 E9.7) (similarity: 0.654923) demonstrates that the way in which respondents adopt the usage of multimodal material and the combination of learning the cognitive object in conjunction with language learning is important.

Even the similarity (E9.10 E9.11) (similarity: 0.786626) demonstrates the similar tactics of respondents to choose dramatization and role play and is almost 0.80, ie it has

a very strong similarity. This similarity, (E9.10 E9.11) (similarity: 0.786626), is not only stronger in the second group but also the strongest in relation to all other similarity groups. The second group (Group B) of similarity ((E9.2 E9.7) (E9.10 E9.11)) (similarity: 0.196121) has marginally significant similarity.

The third similarity group (Group C) refers to similarity relationships between variables ((E9.3 E9.4) (E9.5 E9.8)) (similarity: 0.139605). In particular, the similarity (E9.3 E9.4) (similarity: 0.616031) demonstrates the similar tactics of respondents adopting as assistive strategies in their teaching or suggesting to the teachers they work with both the usage of new technologies and the usage of electronic dictionaries and text bodies. The second similarity within the third similarity group is between the variables (E9.5 E9.8) (similarity: 0.582029) and demonstrates the same way in which respondents approach the usage of illustration and surveillance material and the usage of text organizers (preface, italics). The third similarity group (Group C) ((E9.3 E9.4) (E9.5 E9.8)) (similarity: 0.139605) bears very little resemblance, indicating that respondents vary considerably in their usage of new ones. Technologies and the usage of electronic dictionaries and text bodies from the use of illustration and supervisory material and the use of text organizers



Arbre des similarites : C:\Users\User\Desktop\AMAAIA ΔΙΑΚΤΟΠΙΚΟ\AMALIA C MEROS EROTHSH 9 CHIC.csv

Figure 1: Similarity graph

The hierarchical diagram: The hierarchical diagram (Figure 2) presents the inductive relationships between the variables in order of importance. In addition, in the hierarchical diagram the direction of these relationships can be seen.

Regarding the first hierarchy, the group refers to the items (E9.10 E9.11) (cohesion: 0.895) which is highly cohesive and shows that when respondents use dramatization then they also use role play. In addition, the hierarchy ((E9.10 E9.11) E9.12) (cohesion: 0.81) which is highly cohesive shows that when respondents use dramatization then they use role play and use simulation. The hierarchy (E9.13 (E9.10 E9.11) E9.12)) (cohesion: 0.723) which shows significant coherence shows that when respondents use the experiment then they use the role play and use simulation as well demonstrates the hierarchy ((E9.13 ((E9.10 E9.11) E9.12)) E9.8) (cohesion: 0.601) finally use text organizers (prologue, italics).

Hierarchy (E9.2 E9.7) (cohesion: 0.779), which is highly coherent, shows that when respondents use polytopic material then they use a combination of learning the cognitive object in conjunction with language learning and hierarchy ((E9.2 E9.7) E9.5) (cohesion: 0.686) demonstrates that respondents use multimodal material, a combination of learning the cognitive object in conjunction with language learning and illustration and supervisory material.

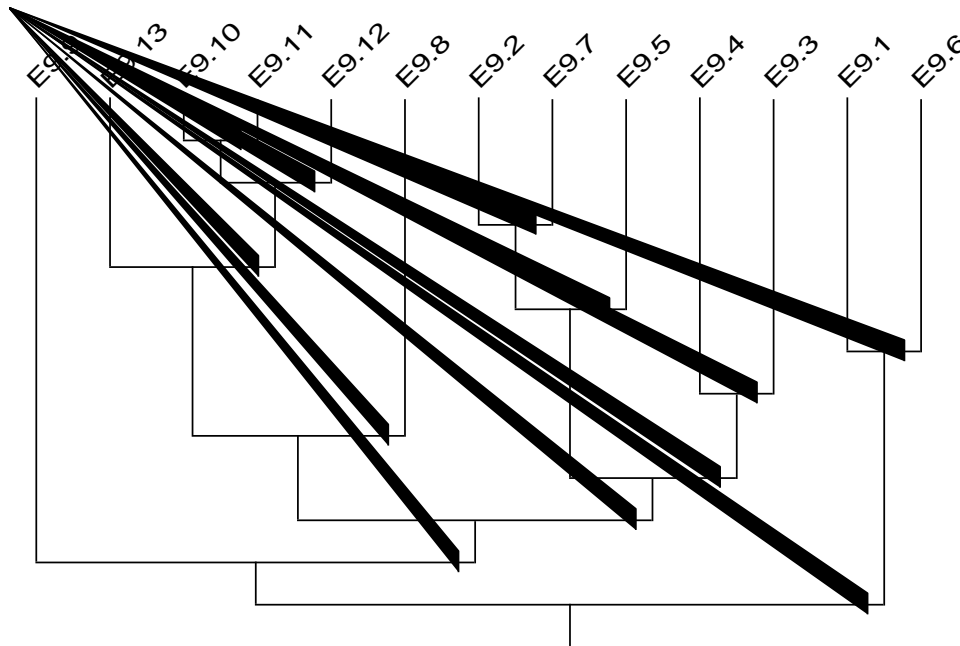
Hierarchy (E9.4 E9.3) (cohesion: 0.655), which is significantly consistent, shows that when respondents use electronic dictionaries they also use new technologies.

The hierarchy ((E9.2 E9.7) E9.5) (E9.4 E9.3)) (cohesion: 0.587), which shows significant coherence, demonstrates that the hierarchy ((E9.2 E9.7) E9.5) (cohesion: 0.686) demonstrates hierarchy (E9.4 E9.3) (cohesion: 0.655). It becomes clear that when respondents use multimodal material, a combination of learning the subject matter in conjunction with language learning and illustration and surveillance material they make use of electronic dictionaries and new technologies.

The hierarchy (((E9.13 ((E9.10 E9.11) E9.12)) E9.8) (((E9.2 E9.7) E9.5) (E9.4 E9.3))) (cohesion: 0.539) which is significant demonstrates that hierarchy ((E9.13 ((E9.10 E9.11) E9.12)) E9.8) (cohesion: 0.601) demonstrates hierarchy (((E9.2) E9.7) E9.5) (E9.4 E9.3)) (cohesion: 0.587). Similarly the hierarchy (E9.9 (((E9.13 ((E9.10 E9.11) E9.12)) E9.8) (((E9.2 E9.7) E9.5) (E9.4 E9.3)))) (cohesion: 0.495) with significant hierarchy demonstrates that when respondents use techniques to condense, develop or modify texts as teaching aids then they use experimentation, role play, notation and, finally, text organizers (preface, italics).

Hierarchy (E9.1 E9.6) (cohesion: 0.679) with significant hierarchy demonstrates that when respondents use conventional words they use recall of previous knowledge.

Finally, the hierarchy ((E9.9 (((E9.13 ((E9.10 E9.11) E9.12)) E9.8) (((E9.2 E9.7) E9.5) (E9.4 E9.3)))) (E9.1 E9.6)) (cohesion: 0.461) with significant hierarchy demonstrates hierarchy (E9.9 (((E9.13 ((E9.10 E9.11) E9.12))) E9.8) (((E9.2 E9.7) E9.5) (E9.4 E9.3)))) (cohesion: 0,495) implies hierarchy (E9.1 E9.6) (cohesion: 0.679).

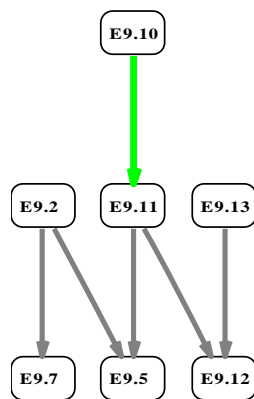


Arbre cohesitif : C:\Users\User\Desktop\AMAAIA ΔΙΑΚΤΟΠΙΚΟ\AMALIA C MEROS EROTHSH 9 CHIC.csv

Figure 2: Hierarchical diagram

The implicative graph: The implicative graph shows the inductive relationships between the variables (Figure 3). The diagram presents one and only chain E9.10-> E9.11-> E9.5, E9.12, E9.2-> E9.7, E9.5, E9.13-> E9.12.

In more detail, in the first part of the co-production chain E9.10-> E9.11-> E9.5, E9.12, the dramatization becomes apparent. Supervisory material as well as simulation. The part of the co-production chain E9.2-> E9.7, E9.5 makes it clear that the use of multimodal material leads to the use of a combination of learning the cognitive object in combination with learning the language of both illustration and supervisory material. The unambiguous part of the co-production chain E9.13-> E9.12 makes the relationship between experiment and pre-notation obvious.



Grphe implicatif : C:\Users\User\De99:95\901\80IA ΔΙΑΚΤΟΠΙΚΟ\AMALIA C MEROS EROTHSH 9 CHIC.csv

Figure 3: Implicative graph

The reliability of the instrument was related to items E9.1. to E9.13 was estimated by Cronbach alpha coefficient (α). The value of Cronbach's α coefficient for this instrument was equal to 0.949 and it is a very high value in terms of internal consistency (Anastasiadou et al., 2010b; Anastasiadou, 2011; Anastasiadou, 2018b; Anastasiadou, 2018c; Anastasiadou, 2018d, Anastasiadou, 2018e; Anastasiadou & Anastasiadis, 2011; Anastasiadou & Anastasiadis, 2019; Anastasiadou & Zirinoglou, 2014, Anastasiadou et al., 2016; Anastasiadou & Taraza, 2019; Anastasiadou & Taraza, 2020a; Anastasiadou & Taraza, 2020b).

Conclusions

From the analysis of the data it becomes obvious dramatization that it leads the questioners to use the role play and it is the role play that motivates them to use illustration and surveillance material as well as simulation. Even the use of multimodal material leads to the use of a combination of learning the cognitive object in combination with learning the language of both illustration and supervisory material. The gap between the experiment and the pre-note is obvious.

References

- Anastasiadou, S. (2011). Reliability and validity testing of a new scale for monitoring attitudes toward learning statistics with technology. *Acta Didactica Napocencia*, vol. 4 number 1, pp. 1-10. <http://adn.teaching.ro/>.
- Anastasiadou, S. (2018a). Comparison of multivariate methods in group/cluster identification. Dissertation thesis of the degree of MSc. in Research Methodology in Biomedicine, Biostatistics and Clinical Bioinformatics, Faculty of Medicine, University of Thessaly.
- Anastasiadou, S. (2018b). *Gap analysis between perceived and expected of service quality in Greek Tertiary Education*. Proceedings of EDULEARN18: 10th annual International Conference on Education and New Learning Technologies, Palma de Mallorca, Spain, pp. 8373-8382. doi:10.21125/edulearn.2018.1951.
- Anastasiadou, S. (2018c). Evaluating Perception, Expectation of Students/Pre-service Teachers and Service Quality Gap in Greek Tertiary Education. *KnE Social Sciences*. The Economies of the Balkan and the Eastern European Countries in the changing World (EBEEC 2018), p0. 294–308.
- Anastasiadou, S. (2018d). *Leadership according to EFQM Model in Tertiary education: The case of Greek Universities*. Proceedings of 10th International Conference The Economies of the Balkan and the Eastern European Countries in the changing world, EBEEC 2018, Warsaw, Poland, pp. 20-24.
- Anastasiadou, S. (2018d). *Total quality management in Greek Tertiary Educational System* The case of Greek Universities. Proceedings of 10th International Conference EBEEC 2018 - The Economies of the Balkan and the Eastern European Countries in the changing world, Warsaw, Poland, pp. 59-64.
- Anastasiadou, S. (2019a). *Comparison of contemporary advanced statistical methods regarding construct validity evaluation of TEIQue-SF instrument: Statistical Implicative Analysis vs. Principal Components Analysis*. 9^{ème} Colloque International sur Analyse Statistique Implicative (ASI 10). Belfort – France. pp. 148-163.
- Anastasiadou, S. (2019b). *Representations in statistics problem solving*. ICERI2019, the 12th annual International Conference of Education, Research and Innovation, Seville (Spain), ICERI2019, pp. 8993- 8996.
- Anastasiadou S. & Anastasiadis, L. (2011). Reliability and validity testing of a new scale for monitoring attitudes toward electronics and electrical constructions subject. *International Journal of Applied Science and Technology (IJAST)*, Vol 1, No 1, pp. 1-10.

Anastasiadou S. & Anastasiadis L. (2019). *Quality Assurance in Education in the Light of the Effectiveness of Transformational School Leadership*. In: Sykianakis N., Polychronidou P., Karasavvoglou A. (eds) *Economic and Financial Challenges for Eastern Europe*. Springer Proceedings in Business and Economics. Springer, Cham, pp. 323-344. https://doi.org/10.1007/978-3-030-12169-3_21.

Anastasiadou, S., Anastasiadis, L, Vandikas, J. & Angeletos, T. (2010a). Implicative statistical analysis and Principal Components Analysis in recording students' attitudes toward electronics and electrical constructions subject. *The International Journal of Technology, Knowledge and Society*, Volume 16, Issue 5, pp. 341-356.

Anastasiadou, S. Anastasiadis, L, Angeletos, T. & Vandikas J. (2010b). A Multidimensional Statistical Analysis of Students' Attitudes toward Physics International Journal of Diversity in Organisations, Communities and Nations Volume 16, Issue 5, pp. 341-356.

Anastasiadou, S., Elia, I. & Gagatsis, A. (2007). *Le rôle des représentations dans l'apprentissage des concepts de statistique des étudiants de l'école primaire de Grèce*. In Regis Gras, Pilar Orus, Bruno Pinaud, Pablo Gregori Eds, 4nd International Conference Implicative Statistic Analysis, Castellon, Spain, pp. 135-144.

Anastasiadou, S., Elia I. & Monoyiou, A. (2008). The effects of representations on the learning and understanding of statistics in Greek primary school. *Mediterranean Journal for Research in Mathematics Education*, Vol. 7, 1, pp. 67-80.

Anastasiadou, S. & Giossi, S. (2018). Implicative Statistical Analysis vs. Confirmatory Factor Analysis in evaluation of Lifelong Learning Impact on Human Resources Development. *Proceedings of CERI2018: 12th annual International Conference on Education and New Learning Technologies*, Seville (Spain) pp. 6413-6413.

Anastasiadou, S. & Gagatsis, A. (2017). *Students' representations of linear motion*. Proceedings of 9^{ème} Colloque International sur Analyse Statistique Implicative. 9th International Meeting Statistical Implicative Analysis. Belfort – France, pp. 479-494.

Anastasiadou, S. & Panitsides, E. (2014). And now whither..? European Union lifelong learning policy: a two level analysis Proceedings of EBEEC 2014. The 6th International Conference Economies of Balkan and Eastern Europe Countries in the changed world EBEEC 2014, Nis, Serbia, pp. 42-51.

Anastasiadou, S. & Pappa, A. (2019). *Greek pre-service teachers' perceptions, emotions and attitudes toward representations of physic concepts*. ICERI2019, the 12th annual International Conference of Education, Research and Innovation, Seville (Spain), ICERI2019, pp. 8987-8992.

Anastasiadou, S. & Papadaki, Z. (2019). Consumers' perceptions toward E-Service Quality, Perceived Value, Purchase and Loyalty Intentions. *International Journal of Entrepreneurship and Innovative Competitiveness – IJEIC*, Vol 1, Issue 1, <https://hephaestus.nup.ac.cy/bitstream/handle/11728/11391/paper1.pdf?sequence=1&isAllowed=y>.

Anastasiadou, S. & Zirinolou, P. (2014). Reliability testing of EFQM scale: The case of Greek secondary teachers *Procedia - Social and Behavioral Sciences* Volume 143, pp. 990–994.

Anastasiadou, S.D, Fotiadou, X.G. & Anastasiadis, L. (2016). Estimation of Vocational Training School (IEK) students' contentment in relation to quality of their studies. *New Trends and Issues Proceedings on Humanities & Social Sciences*, [On line].10, pp 09-18. Available from: www.prosoc.

Anastasiadou S., Taraza, E. (2019). Total quality management: implementation of the six sigma methodology for improving quality in higher education, ICERI2019, the 12th annual International Conference of Education, Research and Innovation, Seville (Spain), ICERI2019, pp. 9533-9537.

Anastasiadou, S. & Taraza, E. (2020a). Resistance to Change as an Obstacle Regarding Quality in Higher Education Institutions (HEIS). *Proceedings of of 14th annual International Technology, Education and Development Conference (INTED2020)*, Valencia, Spain, pp. 396-401.

Anastasiadou, S. & Taraza, E. (2020b). Six Sigma in Tertiary Education: A Win of Change regarding Quality Improvement in Education, *Proceedings of of 14th annual International Technology, Education and Development Conference (INTED2020)*, Valencia, Spain, pp. 9595-9601.

Arthur, J. & Martin, P. (2006). Accomplishing lessons in postcolonial classrooms: comparative perspectives from Botswana and Brunei Darussalam. *Comparative Education*, 42(2), 177-202.

Baker, C. (2011). *Foundations of bilingual education and bilingualism* (5th ed.). Clevedon, England: Multilingual Matters.

Blanchard, J., Guillet, F. & Kuntz, P. (2009). Semantics-based classification of rule interestingness measures. Yanchang Zhao, Chengqi Zhang, Longbing Cao. Post-Mining of Association Rules: Techniques for Effective Knowledge Extraction, IGI Global, pp.56-79, 2009. <hal-00420971>.

Blackledge, A. & Creese, A. (2009). *Multilingualism: A critical perspective*. London, England: Continuum.

Brock-Utne, B. (2017). *Multilingualism in Africa, marginalisation and empowerment*. In Coleman, H. (ed.) *Multilingualism and Development*. London: British Council, pp. 64-80.

Coleman, H. (2015). *Language and social cohesion: An introduction and lessons learnt*. In Coleman, H. (ed.) *Language and social cohesion in the developing world*. London: British Council, pp. 1-14.

Couturier, R. (2008). CHIC: *Cohensive Hierarchical Implicative Classification*. *Studies in Computational Intelligence (SCI)*, pp.41-53. Springer-Verlag Berlin Heidelberg.

Couturier, R. & Pazmiño, R. (2015). Statistical implicative analysis for educational data sets: 2 analysis with RCHI, XVIII Congreso Internacional EDUTEC "Educación y Tecnología desde una visión Transformadora", pp. 1-11

Creese, A. & Blackledge, A. J. (2010). Translanguaging in the bilingual classroom: a pedagogy for learning and teaching. *The Modern Language Journal*, 49(1), 103-115.

Cummins, J. (2000). *Language, power, and pedagogy: Bilingual children in the crossfire*. Clevedon, UK: Multilingual Matters.

Christodoulou, T., Gagatsis, A. & Anastasiadou, S. (2017). *Enquête internationale comparative: croyances et attitudes des élèves du secondaire inférieur relatives aux erreurs en mathématiques*. Proceedings of 9^{ème} Colloque International sur Analyse Statistique Implicative, Belfort – France, pp. 404-418.

Cummins, J. (2005). A proposal for action: strategies for recognizing heritage language competence as a learning resource within the mainstream class room. *Modern Language Journal*, 89(4), 585-592.

Cummins, J. (2005). A proposal for action: strategies for recognizing heritage language competence as a learning resource within the mainstream class room. *Modern Language Journal*, 89(4), 585-592.

Cummins, J. (2008). *Teaching for transfer: challenging the two solitudes assumption in bilingual education*. In J. Cummins, & N. H. Hornberger (Eds.), *Encyclopedia of language and education: Bilingual education* (pp. 65-75). Boston: Springer Science Business Media.

Erling, E. J., Adinolfi, L., Hultgren, A. K., Buckler, A. & Mukorera, M. (2016). Medium of Instruction (MOI) policies in Ghanaian and Indian primary schools: An overview of key issues and recommendations. *Comparative Education*, Vol 53 (3). Pp. 294-310.

Erling, E. J., Adinolfi, L. & Hultgren, A. K. (2017). *Multilingual Classrooms: Opportunities and Challenges for English Medium Instruction in Low- and Middle-Income Contexts*. The Open University. Available at: <https://www.theewf.org/uploads/pdf/r-english-medium-instruction-inlowand-middle-income-contexts.pdf>.

Ernst-Slavit, G., & Mulhern, M. (2003). Bilingual books: promoting literacy and biliteracy in the second-language and mainstream classroom. *Reading Online*, 7(2). Available http://www.readingonline.org/articles/art_index.asp?HREF=Oernst-slavit/index.html.

Fotiadis, Th. & Anastasiadou S. (2019). Contemporary advanced statistical methods for the science of marketing: Implicative Statistical Analysis vs Principal Components Analysis. *International Journal of Entrepreneurship and Innovative Competitiveness – IJEIC* Vol 1, Issue 1, <https://hephaestus.nup.ac.cy/bitstream/handle/11728/11393/Paper3.pdf?sequence=1&isAllowed=y>.

Freeman, R. (2007). *Reviewing the research on language education programs*. In O. Garcia, & C. Baker (Eds.), *Bilingual education: An introductory reader* (pp. 3-18). Clevedon, UK: Multilingual Matters.

Gras, R., P. Peter, H. Briand, & J. Philippé. (1997). Implicative Statistical Analysis. In C. Hayashi, N. Ohsumi, N. Yajima, Y. Tanaka, H. Bock, Y. Baba (Eds.). *Proceedings of the 5th*

Conference of the International Federation of Classification Societies, Volume 2, pp.412-419. Tokyo, Berlin, Heidelberg, New York : Springer-Verlag.

Gras, R. & Bodin, A. (2017). L'A.S.I., Analyseur et révélateur de la complexité cognitive taxonomique. 9^{ème} Colloque International sur Analyse Statistique Implicative, Belfort – France, In Jean-Claude Régnier, Régis Gras, Raphaël Coutourier, Antoine Bodin (edus) pp. 128-142.

Gras, R. (1996). The statistical implication-A new method for data exploration (in french). La Pensse Sauvage, editor.

Gras, R. & Kuntz, P. (2008). An overview of the Statitcal Implicative Analysis (ASI) development, In Gras, R., Suzuki, E., Guillet,F and Spanolo, F. (2008). Statistical Analysis: Theory and Applications, Studies in Computational Intelligence Volumr No. 127, Berlin & Heidelberg: Springer- Verlag.

Gras, R. (1979). Contribution étude expérimental et l'analyse de certaines acquisitions cognitives et de certains objectifs en didactique des mathématiques, Thèse de doctorat, l'Université de Rennes 1.

Gras, R. & Couturier, R. (2013). Spécificités de l'Analyse Statistique Implicative par rapport à d'autres mesures de qualité de règles d'association. *Educação Matemática Pesquisa*, 15(2).

Gras, R., Couturier, R., Blanchard, J., Briand, H., Kuntz, P. & Peter, P. (2004). Quelques critères pour une mesure de qualité de règles d'association. *Revue des nouvelles technologies de l'information RNTI E-1*, 3-30

Gras, R., Regnier, J. C. & Guillet, F., (2009). *Analyse statistique implicative: Une méthode d'analyse de données pour la recherche de causalités* (p. 510). Cépaduès Editions.

Gras, R., Régnier, J. C., Marinica, C. & Guillet, F., (2013). L'analyse statistique implicative Méthode exploratoire et confirmatoire à la recherche de causalités (p. 522). Cépaduès Editions

Gras R., Suzuki E., Guillet F. and Spagnolo F. (Eds) (2008). *Statistical Implicative Analysis*. Springer-Verlag, Berlin-Heidelberg.

Guzula, X., McKinney, C., and Tyler, R. (2016). Languaging-for-Learning: Legitimising Translanguaging and Enabling Multimodal Practices in Third Spaces. *Southern African Linguistics and Applied Language Studies*. Vol 34 (3), pp. 211-226.

Heugh, K., Benson, C., Bogale, B. & Yohannes, M. (2007). Final report study on medium of instruction in primary schools in Ethiopia.

Heugh, K. (2013). *Multilingual Education Policy in South Africa Constrained by Theoretical and Historical Disconnections*. *Annual Review of Applied Linguistics* Vol 33. pp215-237.

Karamitrou, A. (2019). *Educational policy and innovation of Greek secondary intercultural education: study of the Greek language teaching programs in the context of intercultural education programs*. Proceedings of ICERI2019 Conference, 2019, Seville, Spain, pp. 11102-11107.

Karamitrou, A. (2019). *Organization and management of education, educational policy and evaluation of the institution of Greek secondary intercultural education*. Proceedings of ICERI2019 Conference, 2019, Seville, Spain, pp. 11044-11052.

Koyama, J. P., & Bartlett, L. (2011). Bilingual education policy as political spectacle: educating Latino immigrant youth in New York City. *International Journal of Bilingual Education and Bilingualism*, 14(2), 171–185.

Lasagabaster, D. & García, O. (2014). Translanguaging: Towards a Dynamic Model of Bilingualism at School/ Translanguaging: Hacia un Modelo Dinámico de Bilingüismo en la Escuela. *Cultura y Educación: Culture and Education* Vol 26 (4). Pp. 557-572.

Lee, J.S. (2007). *Becoming bilingual: Creating interaction spaces to develop L2 proficiency*. Applied linguistic colloquium. University of California.

Lerman, I. C. (1981). *Classification et Analyse Ordinale des Données*, Dunod, Paris.

Lerman, I. C. (1978). *Formes d'aptitude et taxinomie d'objectifs en mathématiques*. In: *Revue française de pédagogie*, Vol. 44, pp. 5-53.

Lundberg, O. (2017). Obstacles to bilingual education: A case study of policy appropriation in a lower secondary school. *Apples-Journal of Applied Language Studies*, Vol, 13,3, pp. 29-54.

Manyak, P. C. (2004). "What did she say?" Translation in a primary-grade English immersion class. *Multicultural Perspective*, 6(1), 12-18.

May, S. (2008). *Bilingual/immersion education: What the research tells us*. In J. Cummins & N. Hornberger (Eds.), *Encyclopedia of language and education*. Vol. 5: Bilingual education (pp. 19–34). New York, NY: Springer.

Manocha, S., and Panda, M. (2017) *Comparing the learning and participatory trajectories of Saora children in 'MLE Plus' and Odia-medium schools in Odisha*. In

- Coleman, H. (ed.) *Multilingualism and Development*. London: British Council, pp. 115-131.
- Milani, T. M. (2008). Language testing and citizenship: A language ideological debate in Sweden. *Language in Society*, 37(1), 27–59.
- Morcom, L. (2017). Self-esteem and Cultural Identity in Aboriginal Language Immersion Kindergarteners. *Journal of Language, Identity and Education*, 16 (6). pp365-380.
- Nicolaou, S. Gagatsis, A., Deliyianni, E., Panaoura, A., Elia, I. & Anastasiadou, S. (2017). Tracing the beliefs and self-efficacy beliefs of undergraduate economic sciences students: the case of the representations of functions. *Proceedings of 9^{ème} Colloque International sur Analyse Statistique Implicative*. Belfort – France, pp. 461-478.
- Ntotsi, P. & Anastasiadou, S. D. (2019). Comparison of multivariate patterning methods in group/cluster identification regarding the science of educational research: Implicative Statistical Analysis vs. L'Analyse Factorielle des Correspondances. *New Trends and Issues Proceedings on Humanities and Social Sciences*. [Online]. 6(1), pp 238–245. Available from from: www.prosoc.eu.
- Perera, S. (2015). *Reflections on issues of language in Sri Lanka: Power, exclusion and inclusion*. In Coleman, H. (ed.) *Language and social cohesion in the developing world*. London: British Council. Pp. 55-74.
- Petridou, A., Elia, I, Gagatsis, A. & Anastasiadou, S. (2017). L'appréhension perceptive des figures géométrique. *Proceedings of 9^{ème} Colloque International sur Analyse Statistique Implicative*. Belfort – France, pp. 231-247.
- Pinnock, H. (2015). *Multilingual education: From 'why' to 'how'*. In Coleman, H. (ed.) *Language and social cohesion in the developing world*. London: British Council, pp. 36-43.
- Schwartz, M. & Abeer Asli, A. (2014). Bilingual teachers' language strategies: The case of an Arabic-Hebrew kindergarten in Israel, *Teaching and Teacher Education*, 38, pp. 22-32.